



Direct Dial/Ext: 03000 416749  
e-mail: [andrew.tait@kent.gov.uk](mailto:andrew.tait@kent.gov.uk)  
Ask for:  
Date: 14 November 2019

Dear Member

**KENT FLOOD RISK MANAGEMENT COMMITTEE - MONDAY, 11 NOVEMBER 2019**

I am now able to enclose, for consideration at next Monday, 11 November 2019 meeting of the Kent Flood Risk Management Committee, the following report(s) that were unavailable when the agenda was printed.

**Agenda Item No**

7

**Drainage and Wastewater Management Plans - Presentation by Max Tant**  
**(Pages 3 - 12)**

Yours sincerely

A handwritten signature in black ink, appearing to read 'B. Watts', is written over a faint circular stamp.

Benjamin Watts  
General Counsel

This page is intentionally left blank

# Drainage and Wastewater Management Plans

Max Tant, Flood and Water Manager

# Drainage and wastewater

- Drainage and wastewater are the services provided by sewerage undertakers.
  - Drainage refers to the network of drains and pipes that connect an area to a sewage treatment works or to an outfall of a public surface water sewer
  - Wastewater is the plant and process at the wastewater treatment works (WwTW)
- There is currently no long-term planning for drainage and wastewater
- Plans are currently made on a 5-year planning cycle, as part of their statutory business planning process

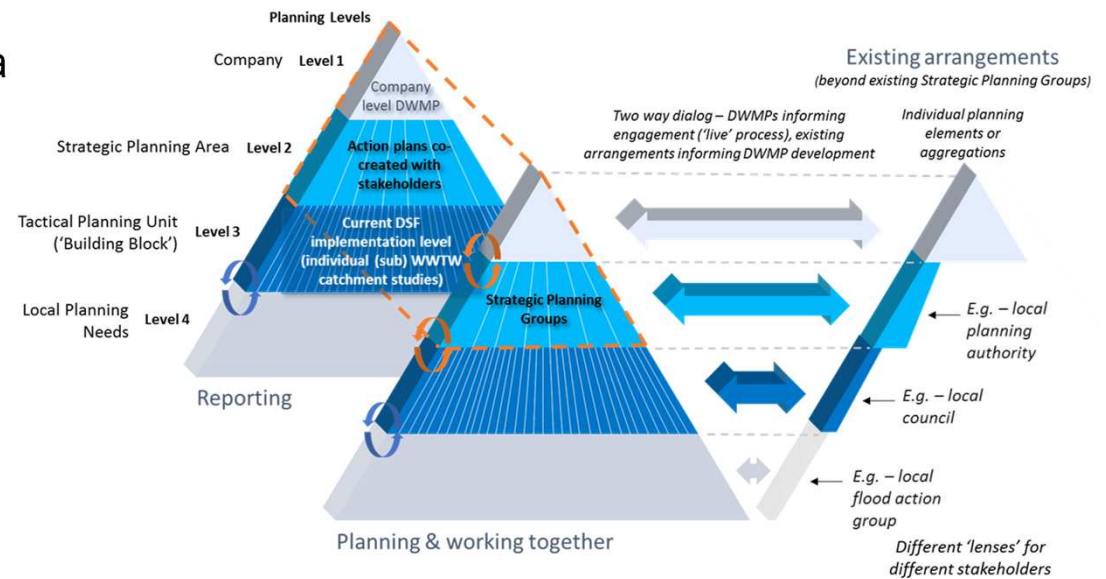
# Drainage and Wastewater Management Plans

- The water industry is under pressure to provide more long-term plans for drainage and wastewater, from government, National Infrastructure Commission and the Environment Agency
- In response, the water industry brought together many organisations with responsibilities for differing aspects of drainage and flooding, to produce a new framework for long term drainage and wastewater planning
- The framework will be used by water companies (in England and Wales) to produce drainage and wastewater management plans (DWMPs), that set out their long term plans for wastewater management

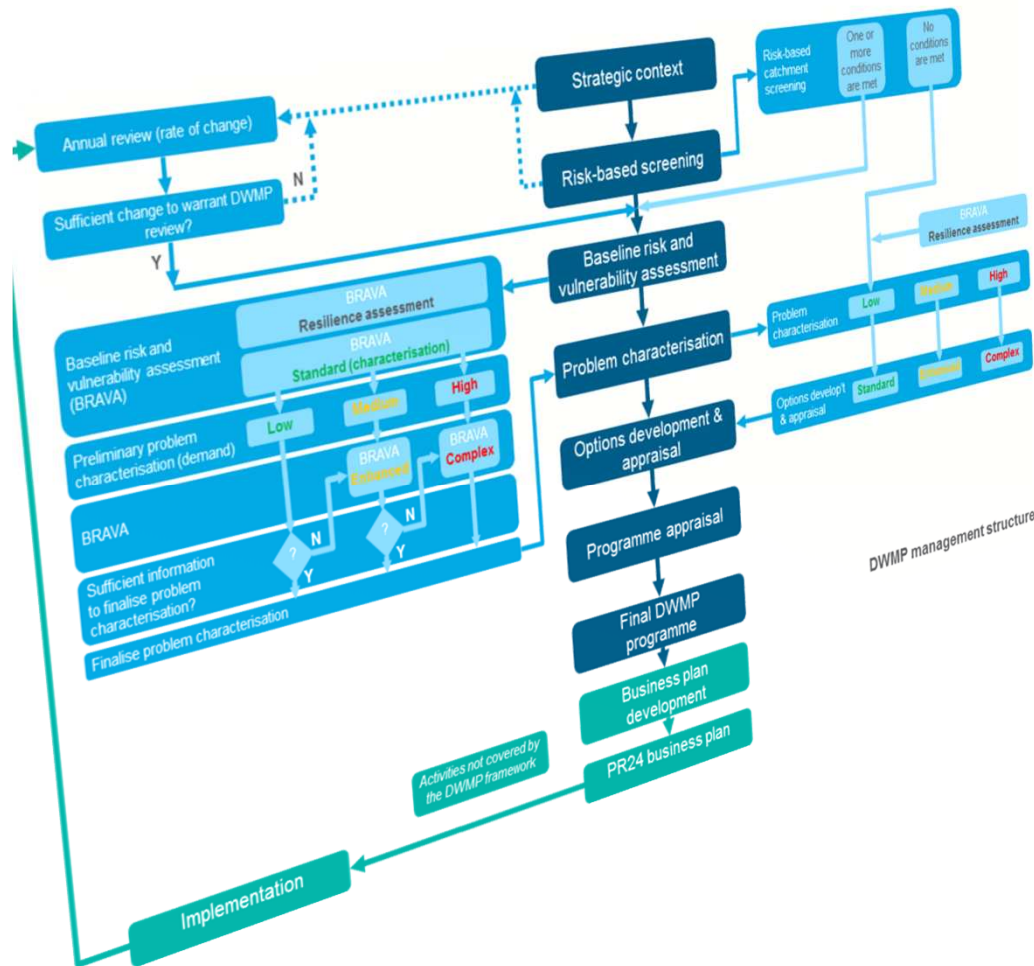


# DWMP scale

- DWMPs are undertaken over three levels of the sewerage undertakers area:
  - Level 3: tactical planning unit –the wastewater treatment works (WwTW) and its catchment
  - Level 2: strategic planning areas – an aggregation of level 3 units into a larger unit (typically a river basin)
  - Level 1: water company DWMP – planning at level 2 and 3 to be brought together within an overarching company level DWMP to provide a strategic, long-term plan for drainage and wastewater resilience and associated investment over the plan period
- Different levels will be of interest to different parties



# DWMP process



DWMP planning process  
Four tiers of planning:

- Risk-based screening
- Baseline risk assessment and vulnerability assessment
- Problem Characterisation
- Options Development

# Opportunity

- DWMPs are intended to be developed collaboratively with partners interested in drainage and wastewater and its implications
- Drainage and wastewater influences:
  - Flooding
  - Planning
  - Water quality
- Organisations that may be interested include:
  - Lead Local Flood Authorities
  - Planning Authorities
  - Highways Authorities
  - Environmental NGOs
  - Environment Agency
- There are opportunities for partners to ensure that their needs are incorporated into drainage and wastewater management planning
- Water UK has produced a non-technical guide to DWMPs: <https://www.water.org.uk/policy-topics/managing-sewage-and-drainage/drainage-and-wastewater-management-plans/>



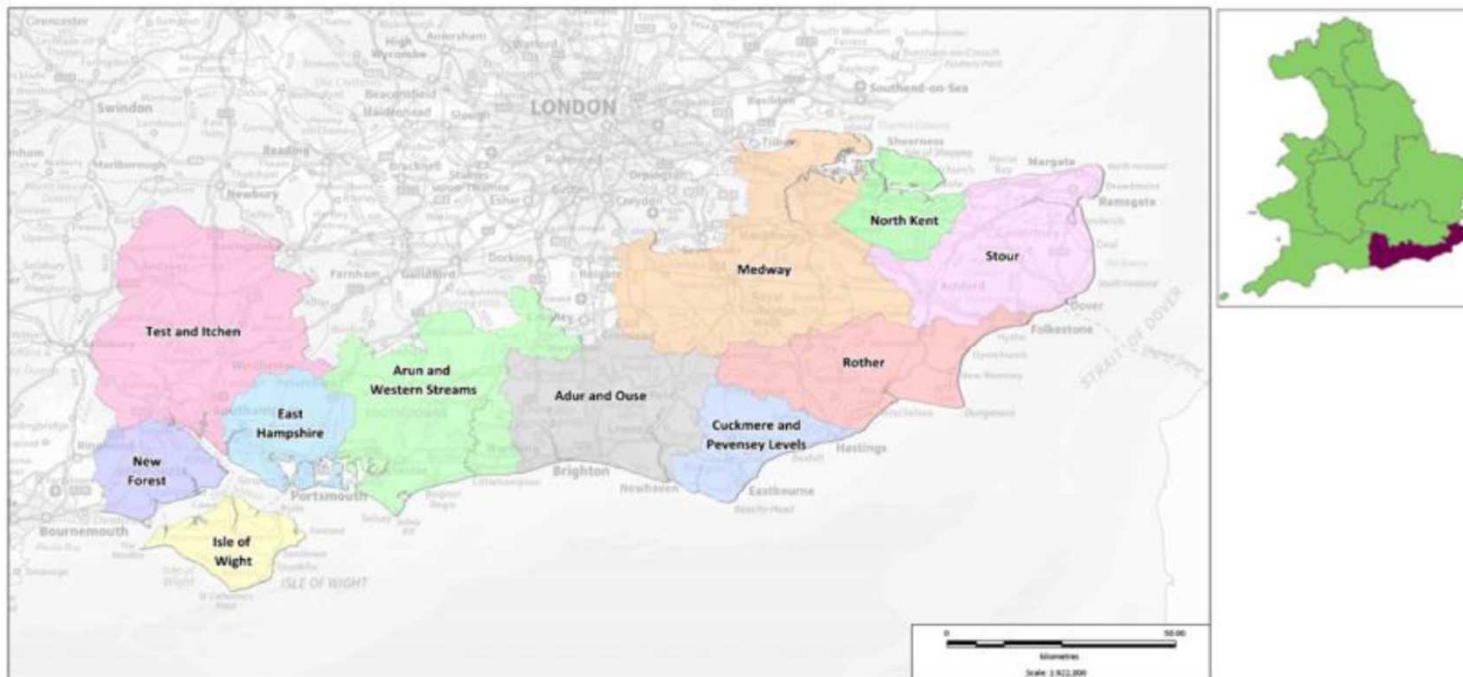


# What will be the benefits to other stakeholders?

- Enable effective planning for, and supporting:
  - economic growth & resilient communities
  - protection and enhancement of the environment, providing greater environmental resilience
- Facilitate the essential integration of partnership working and co-creation of solutions
- Provide multiple benefits to achieve best value to the economy, society and the environment over the long term
- Provide a 'line of sight' to stakeholders who need to engage on investment decisions
- Provide a clear, transparent and consistent framework, with sufficient agility to respond to long term drivers for drainage and wastewater services
- Provide greater confidence to customers, regulators and stakeholders in strategies identified, and resultant plans

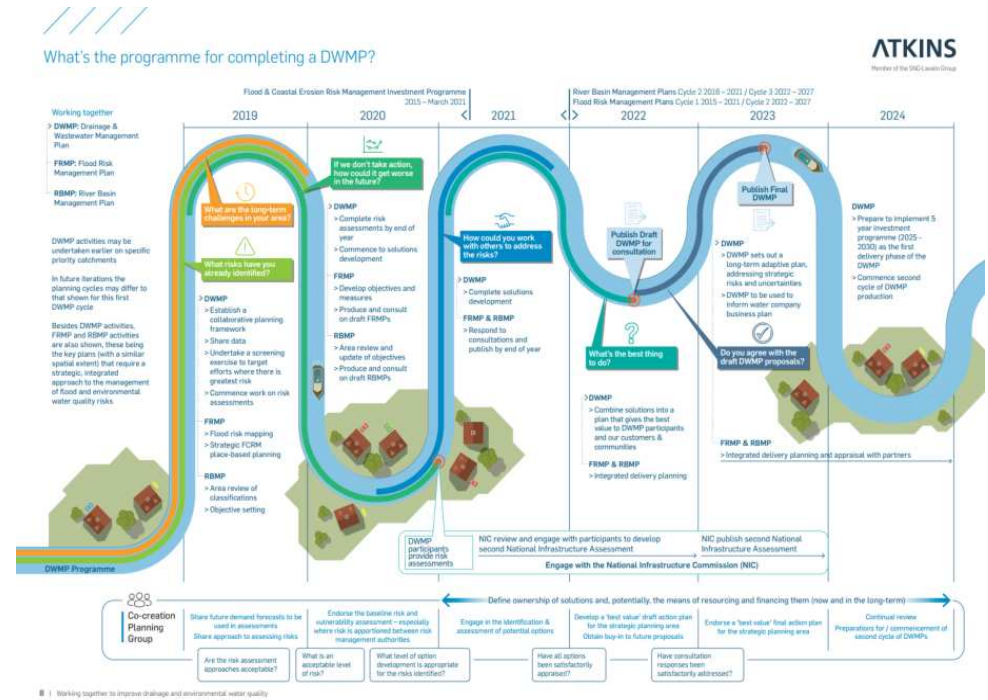
# Local context

- Southern Water are the primary sewerage undertaker in Kent
- They are planning to undertake DWMPs on river basins in their area
- They have commenced their DWMPs in some of these areas



# Timeframe

- Preliminary stages underway
- Water companies commencing engagement to understand priorities and where they overlap
- Draft plans to be published in summer 2022
- Early involvement will give greater potential for shared benefits



**QUESTIONS?**